



The Home of Early Education and Childcare

Building relationships with families and communities to develop every child, in a nurturing and engaging environment.

ALWAYS GROWING NURSERY

- Always Growing Nursery Wessex offers a unique approach to early education and childcare that keeps the children at the centre.
- We do this through our four pillars of pedagogy (4POP).

**Reassuring
Relationships**

**Clear
Communication**

**Continuous
Curiosity**

**Enabling
Environment**

- Pedagogy is the 'how' in our teaching and we would love you to come and visit us to find out more about this. You can also find more information on our website [here](https://www.alwaysgrowing.co.uk).

Get in touch at info@alwaysgrowing.co.uk

HEADLINE INFORMATION

- Our nursery is open 08:00-18:00 year round. We are closed between Christmas and New Year and Bank Holidays, and for 5 INSET days too.

We accept children from the age of 9 months, but also accept 'rising nines' for those children and parents who are ready a little earlier.

- We offer bookings based around full days and half days, with a minimum of four sessions per week (one full day = 2 sessions).
- Bookings are calculated and are payable by a monthly fee. Fees are chargeable 50 weeks of the year.
- We are able to offer the 15 or 30 hours of free childcare. We offer stretched funding and can give you more information about this.

NURSERY KEY FEATURES

We are a key member of the Maidenhead community and pride ourselves on getting to know families, children and their needs to provide a service the community need

Our classrooms meet the 7 areas of EYFS Development

A language rich environment to encourage positive communication and expression

There are structured and child-led play activities take place throughout the session

Children experience elements of all cultures from around the world through music, stories and art

We provide two freshly prepared home-cooked meals each day, with a different weekly menu. As well as a nutritious breakfast daily. We can cater for all dietary needs

We embrace on a range of Early Years pedagogies to promote independence and real life responsibilities

We have two garden areas that allow for learning and being active in the great outdoors. We are also in an excellent location for local trips and walks

A TYPICAL DAY FOR UNDER 3'S

Morning Routine

08.00-09.00: Arrival, welcome and breakfast

Children enter a relaxed, stimulating environment to start their day of exploring. We provide a simple, nutritious breakfast and support all children to brush their teeth afterwards

09.00-10.00: Morning activities and nappy changes

Children take part in focused activities around their interests and calendar events to build and develop key skills. We use national guidance and our 4POP pedagogy to provide a range of experiences.

10.00-11.00: Outdoors and active

Whether we are on our morning walk, watering our plants or playing in the garden, we appreciate the need to explore the wonderful world outside. We try and do this every morning, so bring your wellies! We usually have a healthy snack when out and about to keep the children going to lunch.

11.00-12.00: Indoor exploring and nappy changes

Our indoor environment is designed with our children in mind and we everything they need to explore and develop to their individual next steps. All supported by our wonderful team of teachers.

11.45-13.00: Circle time followed by lunch and relaxed play

We use this time to relax children into a calm meal time. This is done through a range of songs and stories to make the children more aware of themselves and those around them. Lunch is freshly prepared by 'Nan' from our menus carefully crafted with the support of a dietician and lots of research by Ben and the team. All children are encouraged to feed themselves, using proper plates, glasses and cutlery.

After lunch we say goodbye to our morning children and welcome our afternoon children to the session.

Afternoon Routine

13.00-15.00: Nap time and nappy changing and snack as they wake up

Children all sleep on age appropriate beds with bedding brought from home. We try to follow your strategies at home as close as possible and comfort children to help them settle and get a good sleep in. As they wake children are offered another snack from a selection of healthy bites that we offer.

15.00-16.00: Afternoon activities

Children engage in more activities in the room with their friends and teachers to support their development across the Early Years Framework whether it is in the arts and crafts area, using our indoor climbing frame or reading stories together.

16.00-16.30: Dinner time

Food for dinner is also freshly prepared by 'Nan' and from our varied and balanced menus. We carefully consider all dietary needs and ensure our meals are suitable for the children. Again, children are encouraged to feed themselves and use proper plates, glasses and cutlery.

16.30-18.00 Free play exploring the room as children get collected

Children can again explore the environment, maybe they will use our Montessori resources this time or explore the construction equipment and practice their fine and gross motor skills.

A TYPICAL DAY FOR OVER 3'S

Morning Routine

08.00-09.00: Arrival, welcome and breakfast

Children enter a relaxed, stimulating environment to start their day of exploring. We have a free flow breakfast open during this time for the children who will then brush their teeth.

09.00-09.30: Carpet time

During this time all the children sit together to welcome each other and for a range of stories and/or songs as well as to share they own stories or show and tell

09.30-11.40: Play and learning through free flow and focus activities along with snack time

Children explore the spaces we have available in a range of child-led and structured activities. They are responsible for washing their hands and enjoying the free flow snack as well as tidying up after themselves. Children explore the generous outdoor space available where they can play in the sand pit or engage in a range of physical activities such as climbing up and down the climbing frame.

11.40-12.00: Carpet time

Tidy up time and gather on the carpet for a relaxed carpet session to prepare for lunch

12.00-12.30: Lunch time

For fee paying children, lunch is freshly prepared by 'Nan' from our menus carefully crafted with the support of a dietician and lots of research by Ben and the team. All children are encouraged to feed themselves, using proper plates, glasses and cutlery. Other children bring in a packed lunch to be enjoyed with everyone all together.

***After lunch we say goodbye to our morning children and welcome our afternoon children to the session.
We do this through songs, books or calming activities - to get the children ready for an engaging afternoon.***

Afternoon Routine

12.30-14.40: Play and learning through free flow and focus activities along with snack time

Children explore the spaces we have available in a range of child-led and structured activities. They are responsible for washing their hands and enjoying the free flow snack as well as tidying up after themselves. Children explore the generous outdoor space available where they can play in the sand pit or engage in a range of physical activities such as climbing up and down the climbing frame.

14.40-15.15: Tidy up time and carpet time

To allow afternoon children to leave the nursery and keep. The children staying engaged in a range of stories.

15.15-16.30: Relaxed play into tea time

Children staying for the full day continue to engage in the play spaces both indoors and outdoors before washing their hands for tea time which is freshly prepared by 'Nan' from our menus carefully crafted with the support of a dietician and lots of research by Ben and the team.

16.30-18.00 Play and learning

Child are collected during this time whilst engaging in a range of child-led and structured activities around the rooms.

EARLY YEARS AND PRACTICAL SUPPORT

- Always Growing teachers plan and evaluate daily activities to support children's play at the rate and stage that suits your child. Frequent observations are carried out to help identify the stage of children's development and monitor progress carefully to celebrate achievements and identify areas in need of greater focus

We encourage care of the person and care of the environment throughout the nursery. Alongside this, we are promoting fine motor skills, coordination, sequencing and independence

We have meetings with parents across the year to discuss your child's progress

Online Learning Journeys

Holistic recording of learning and development

Links to Early Years Foundation Stage

View your child's progress at a glance whenever you wish on Family

Digital copy goes home with child when they graduate from nursery

Collaborative multi-agency working to support children

FAMILY - HELPING OUR PARTNERSHIP

Once your child starts, you will receive log in information for our Family app. You can set up other family members so they can keep in touch too.

Family is an online and mobile tool that will enable us to communicate effectively with you, and vice versa.

You will be able to get daily insight into your child's activities with the News Feed. It is also a way of monitoring attendance and sickness too.

We use Family as part of our assessment and monitoring of children's development, so you can keep track of this and add your own observations and news from home.

If you have any questions or issues using this software please let us know, it has been designed to make working together easier so we can all focus on supporting the children in every way we can.



MEAL TIMES

- All meals are served family style. We sit together and take time to talk about our day. We provide a varied breakfast and children bring their own packed lunch. We always consider dietary requirements, so please let us know at registration about any specific needs.
- The children are encouraged to do all they can themselves, including setting the table and clearing their own place away. We encourage the use of utensils, but understand when children may still be working on this.
- Children are always encouraged to eat at meal times and to try new tastes and textures. We consult with professionals to ensure our menu is wide-ranging and healthy. We also make sure that there is fruit available throughout the day at snack times
- When necessary, children use metal knives and forks as well as glasses and plates. We support them as much or as little as they need throughout this time

GOING GREEN

At Always Growing we strive to reduce our carbon footprint in anyway we can, there are several ways in which we do this and many good reasons why.

- Encouraging all parents to provide wash bags and if needing to use nappy sacks using eco friendly ones.
- Having a recycling system in place
- Our weekly 'help yourself trolley' to ensure our fruit is eaten over the weekends rather than going off
- We encourage parents to use mineral sun cream
- We encourage parents to bring in silicone or stainless steel bottles.
- We do not use glitter
- We are growing our own fruit and vegetables across our sites. (In development)
- Using reusable wash cloths for both nappy changes and mealtimes. (In development)

Using an eco-friendly approach allows children to have hands-on learning of the real world and unlocks creativity. They also become more engaged about the environment around us.

TOILET LEARNING

- We have appropriate size toilets for the children to use
- For those in nappies we change them by the toilets, standing up where possible, to encourage the association and promote toilet training
- We are happy to discuss a plan for transitioning to underwear and completing toilet training when the time is right for you all

SLEEP

- The children sleep on nap-time beds and most children have a rest in the afternoon.
- We work with parents to establish the sleep routine for each child
- Children will bring bedding which we will send home at the end of each week
- If your children wets their sheets, we will send them home at pickup time to be washed and returned the following day

CLOTHING

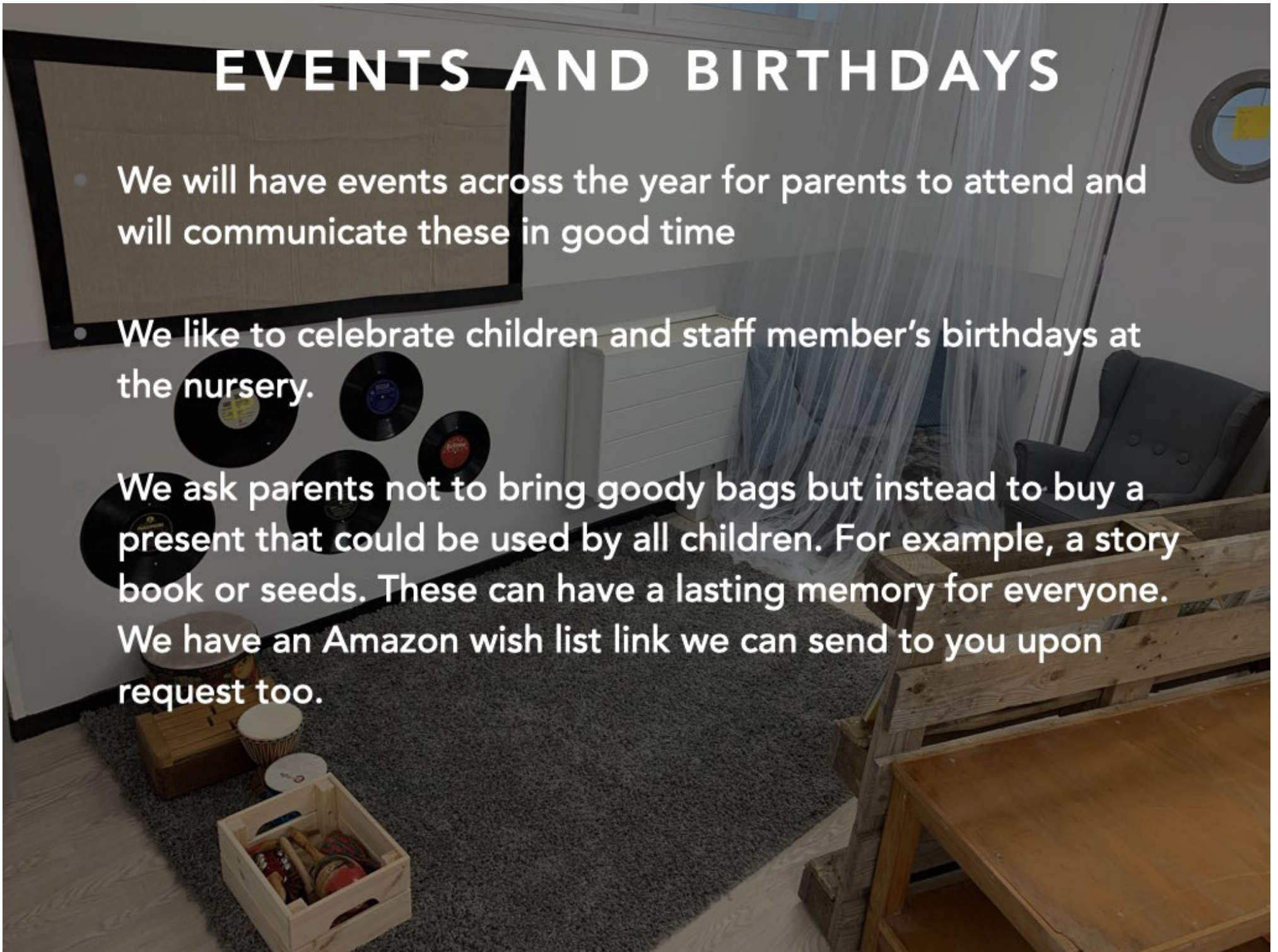
When your child joins, please ensure they have the following items all labeled:

- At least 3 complete changes of clothes
- Suitable indoor shoes
- Fitted sheet and blanket
- Nappies, cream and wipes
- Sun hat and sun cream for summer
- Winter hat, coat, mittens and wellington boots for winter
- All in one waterproof
- Cloth laundry bag
- Toothbrush, toothpaste in a small bag

EVENTS AND BIRTHDAYS

- We will have events across the year for parents to attend and will communicate these in good time
- We like to celebrate children and staff member's birthdays at the nursery.

We ask parents not to bring goody bags but instead to buy a present that could be used by all children. For example, a story book or seeds. These can have a lasting memory for everyone. We have an Amazon wish list link we can send to you upon request too.



BOOKING YOUR PLACE

We are delighted that you are considering booking with Always Growing. Here is a bit more information about how the booking process works and what is required at each stage

1. Email info@alwaysgrowing.co.uk confirming that you would like to register for the nursery

2. Complete the registration form [here](#) then booking request form [here](#). You will need to let us know which days and sessions you require at this point

3. If you are eligible for the 2 year old or 3 and 4 year old funding, there are additional forms to complete. We will require this before we confirm your fees

4. Once we receive your booking request, we will send you a fee schedule and breakdown. At this point we require a non-refundable 25% deposit

5. Check out <https://www.childcarechoices.gov.uk> for more information about different schemes available to help save money on your fees

6. We will arrange a date for you to come in with your child to complete our starter pack and consent form and plan when the settling in sessions take place

7. Once the settling sessions have been completed it is time to start your Always Growing Journey! The balance of your fees will be due before the first session

8. Fees are payable one month in advance, so you will need to make sure the payments are set up to reach our account in time

WHAT ELSE WOULD YOU LIKE TO KNOW?

What experience and qualifications do we have?

Always Growing is passionate about developing staff. We are lead by two qualified teachers who are able to draw on their extensive experience of teaching to support the children in our care. All of our Senior Leadership Team hold qualifications at Level 3 or higher and all of our other staff either hold relevant childcare qualifications or are working towards one. We provide regular internal training for everyone, as well as safeguarding training updates.

How do we support children with additional needs?

Our team is lead by our Special Educational Needs Coordinator (SENCO). We have considerable experience in supporting children and young people who have additional needs, medical needs or who are fostered. Please get in touch with us to discuss individual cases and to set up an action plan

What is the procedure for giving medicine to children?

As outlined in our medical policy, we are able to administer prescribed medicine to children with medical consent. We are also able to support children who may need an auto injector for allergies or children who need regular medication

What is the approach to discipline?

Always Growing's philosophy is to manage behaviour in a positive way. We have a range of different strategies in managing behaviour and we encourage children to make good choices. We have a clear, consistent routine and structure to engage the children positively. We have sufficient variety and activities available and ensure that we have plenty of staff to support the children in every way

Where can I see your policies?

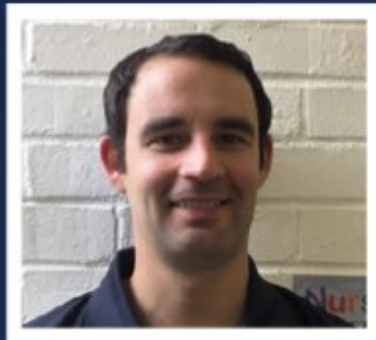
All of our policies are available to view, some on our website, or all on site in the nursery.

MEET THE LEADERSHIP TEAM

Lewis - Director



I'm Lewis and I started Always Growing in January 2015 with the aim of providing the highest quality childcare provision. My journey in childcare began with my Level 5 in Playwork. Since then, I have achieved my BSc (Hons) in Psychology, MA in Education and am a Qualified Teacher. I am now working towards my Doctorate in Education which has introduced me to the world of research in the sector, opening my eyes to the challenges faced around the world working with the youngest and most precious children. This has compelled me to advocate for the sector widely, promoting the professionalism and respect for the workforce that they deserve. This is reflected in my role at Always Growing which primarily focuses on staff well-being and development, as well as the everyday challenges and excitement that come from running a small business. These challenges and excitement keep a smile on my face and motivate me to do my best for the children, everyday.



Ben - Director

I'm Ben and have been with Always Growing from the beginning. My journey working with children began in schools teaching a range of students a range of subjects. I began to specialise in Special Educational Needs and inclusion and was SENCO and Designated Safeguarding Lead for many years. I have a Post Graduate Certificate in Special Educational Needs and Disability. In addition, I have a BSc (Hons) in Psychology, am a Qualified Teacher, and am the Designated Safeguarding Lead for Always Growing. I am very passionate about all children being included and supported in the unique way they all deserve and strive to ensure all children are welcomed across our settings. This includes regular training and updates with the team and getting to know families with additional needs personally so I can ensure they are properly supported.

MEET THE LEADERSHIP TEAM

Sam - Co-Leader of Education and Operations



I'm Sam and have been working in the Early Years Sector for the past 25 years. I started my career working as a nanny before moving into working in a nursery and completing my Montessori training for children age birth to six. I am also a qualified forest school leader and first aid trained. I am responsible for developing our learning curriculum and putting into the place the four pillars of pedagogy into the children's every day experiences at Always Growing. I am passionate about the children developing their independence at nursery and love to see all the children sitting eating together at the table using china plates and glasses and enjoying mealtimes as one group.

I deal with the day to day operations of the setting - ensuring that ratios are maintained, organising visits for new children, as well as looking after the well being of the staff too and stepping into the classroom if needed which is the favourite part of my job especially if it involves reading a story.



Shakiba - Co-Leader of Education and Operations

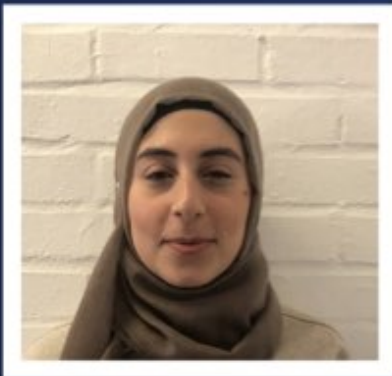
I'm Shakiba and I have been working in the Early Years for over 13 years. My drive to gain deeper insight into child development led me to achieving my BA (Hons) in Childhood and Youth Studies. Following my passion in Early years and focusing on how every opportunity is a learning opportunity, I promote the ethos to help build those foundations for young children through the delivery of the Early Years Foundation Stage (our curriculum) across the Always Growing settings. Working closely with the children, teams, and families - we aim to make sure that every voice is heard.

MEET THE PROVISION LEADERS



Tara - Provision Leader for under 3's

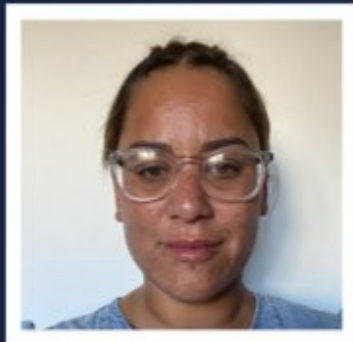
Hi I'm Tara. I first became passionate and interested in working with children over 10 years ago, when working in a school nursery for work experience. Since then I have developed my knowledge considerably by supporting a range of children's development. I have worked in many early years settings from 9 months to 5 years old, learning more than a handful of different approaches. Over the years of building my knowledge and experience and wanting to develop my knowledge more, led me to completing my BA (Hons) in Children and Young People last year. I have learnt that all children can flourish they just need the right learning approach and a homely setting, and that is why I find it is important to combine a range of approaches when overseeing a room to allow children to learn in the way that is unique for them.



Yasmina - Provision Leader for over 3's

I'm Yasmina and I currently hold a BA degree in Education. I'm also studying an MA in Education with a Leadership and Management specialism and hope to start working towards Early Years Teacher Status in the near future. I am always curious to learn more and eager to put what I learn into practice. I have over 4 years of experience with children of varied ages in a range of different settings such as nurseries, pre-school, holiday club and after school club. I am incredibly passionate about diversity and inclusion and I aim for every child to be engaged and stimulated in their learning, whether this takes place in the classroom or outdoors!

MEET THE NURSERY TEAM



Paris - Nursery Teacher

Hi i'm Paris I'm currently a level 2 Early Years practitioner, looking forward to doing my Level 3 soon. I've worked at Wessex Primary School for almost 2 years where I've learnt a lot. I'm excited to be apart of the Always Growing team where I can continue to grow. My favourite part about working in nurseries is being that nurturing figure for the children and watching them reach their own individual learning goals.



Sophie - Apprentice Nursery Teacher

Hello I'm Sophie. I'm mum to 2 gorgeous boys who attend Wessex Primary School. I was lucky enough to get a Teaching Assistant role in the nursery back in 2019 and have loved it ever since, it's such a nurturing environment to be in. Working with young kids is brilliant, their love and fun outlook on life is infectious. I'm very much looking forward to continuing this role with the Always Growing team.



Colette - Nursery Teacher

I'm Colette and I'm a NNEB Level 3 qualified practitioner with over 25 years experience working with children from birth to 7 years. I have worked at Wessex since 2003, both in the nursery and also supporting hearing impaired children in the school's Hearing Resource Base. I specialise in helping to develop speech and language through play, which I find immensely rewarding.

HOW TO FIND US



- There are two entrances to the nursery ★ accessible at different times, so it is essential the following points are understood.
- Both entrances are off Wessex Way.
- Entrance **1** on St Adrians Close is only to be use outside of school times
- During school hours, entrance **2** on Powis Close must be used.
- Entrances will not be open outside of these times
- You can park along Wessex Way for drop off with ease



www.alwaysgrowing.co.uk
info@alwaysgrowing.co.uk

Business Address:
Always Growing Limited
48 Haywards Mead
Eton Wick
Windsor
SL4 6JN

Premises Address:
Wessex Primary School
St Adrians Close
Maidenhead
SL6 3AT