

The background of the entire image is a high-angle photograph of a cobblestone path. Several large, dark shadows of hands are cast across the stones, with their fingers spread out as if supporting or holding a child. The shadows are cast from the top and sides, creating a sense of being held from above.

ALWAYS

GROWING

A graphic illustration is positioned between the 'ALWAYS' and 'GROWING' text boxes. It features a yellow sunflower with a brown center and green leaves. To the right of the sunflower, three stylized human figures are walking in a line, increasing in size from left to right. The figures are yellow with blue outlines.

Building relationships with families and communities to develop every child in a nurturing and engaging environment

DEVELOPING CHILDREN AND YOUNG PEOPLE OUTSIDE THE SCHOOL SETTING

In January 2019, we launched the Always Growing Nursery. This provision looks after children from the age of 9 months (and rising nines) until school age across our two rooms.

We provide high quality childcare all year round.

Our services include a Multi-Activity Holiday Time Provision for 3-13 year olds and a developmental After School Provision operating at The Windsor Boys' School.

The Lounge provides a safe place across our term-time and holiday time provisions where 9-13 year old children can come year round. The Lounge is a place where they can interact with friends, eat healthy snacks and keep their minds active and challenged. It has been a big hit with the children!

ALWAYS



OUR CORE VALUES

PLAY. LEARN. SMILE.

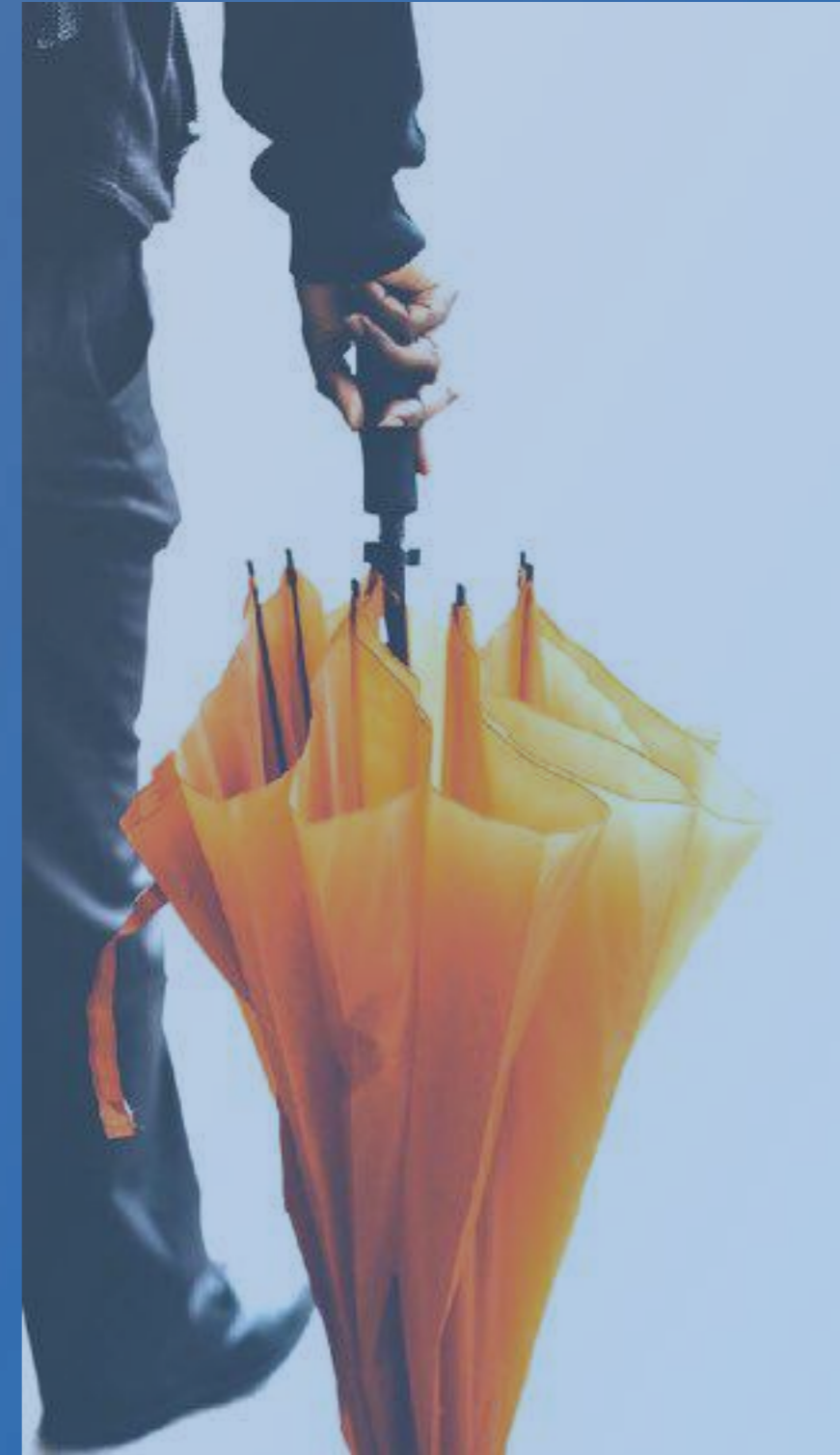
We know that choosing childcare is one of the most important decisions that you will make.

At Always Growing we strive to provide the highest quality provision to develop children and young people outside of the school setting.

Our dedicated, educated and committed team always puts the child at the centre so they can
PLAY. LEARN. SMILE.

YOUR CHALLENGES

- Finding childcare that is run by qualified teachers and supports the all-round development of children and young people
- Finding childcare that feels like home
- Finding a flexible service with a range of collection and drop-off options, allowing children to access other clubs
- Finding childcare that collects from different schools and nurseries to bring siblings together to one place
- Finding consistent staffing that work all-year round and gets to know your children and family
- Finding childcare that works for you in term-time, holiday time and all year round



ALWAYS GROWING - YOUR SOLUTION TO ALL YOUR CHILDCARE NEEDS

Always Growing
Nursery

Childcare for 9
months - 5 year
olds all year round

Always Growing
School Holiday

Wraparound
childcare for 3-13
year olds in school
holidays

Always Growing
After School

Collection from
school and
nurseries for 3 -
13 year olds in
term time

SCHOOL HOLIDAY CARE

KEY FEATURES

- Our holiday time child care operates during school holidays and some inset days
- We are open daily from 08:00-18:00 and run a multi-activity provision from age 3-13

Flexible booking options to suit your needs. We offer full day as well as half day AM and PM sessions to give you ultimate flexibility

Sunflower Project, lead by qualified teachers, provides support with homework alongside developing numeracy, literacy and other key skills

Trained EYFS specialists ensure that little ones get the extra care and support they need to flourish

Collection and drop-off service: We can collect from other clubs and drop off to other providers, e.g. Brownies, Beavers or Football to provide complete flexibility in holiday times

The Lounge is open for children aged 9 and older so that they have their own space and greater independence

Different weekly themes and clear, structured routine provide a fun, stimulating and nurturing environment for all children


A TYPICAL WEEK IN HOLIDAY TIME

ALWAYS

GROWING



Spectacular Superheroes Week 19 - 23 August 2019

Time	Monday	Tuesday	Wednesday	Thursday	Friday
08:00	Early Drop Off - Welcome to the early arrivals				
08:30	Welcome Activity and Free Play - don't forget your wristband!				
09:30	Morning Registration and Welcome				
09:45	Banner Making	Outdoor Play	Find your Nemesis	Superhero Headbands	Outdoor Play
	Create your own Superhero	Mask Making	Outdoor Play	Superhero Cuffs	Face Paint
10:30	Healthy Morning Snack - Provided by Always Growing				
11:00	Sunflower Project		Junk Modelling Challenge	Outdoor Play	Team Challenge
	Outdoor Play		Sunflower Project	Playdough Making	Superhero Skyline Pictures
12:00	Lunchtime! Packed lunch provided by parents. Don't forget to make it nut free				
12:30	Free Play	Free Play	Free Play	Free Play	Free Play
13:15	Afternoon Registration and Welcome				
13:30	Bouncy Castle	Sunflower Project	Superhero Captain Shields	Sunflower Project	Disco
	Lollipop Superhero	Superhero Spoons	Outdoor Play	Outdoor Play	Party Games
14:30	Healthy Afternoon Snack - Provided by Always Growing				
15:00	Friendship Bracelets	Outdoor Play	Design your own Superhero Badge Keyring	Playdough Making	Movie Afternoon
	Outdoor Play	Superhero Bracelets	Outdoor Play	Bouncy Castle	
16:15	Tuck Shop - don't forget your 50p to spend				
16:45	Free Play	Free Play	Free Play	Free Play	Movie Afternoon
17:30	Home Time				
18:00	Late Pick Up - If you are staying late for more playtime				

TERM TIME CARE KEY FEATURES

- Our term-time childcare operates during term-time only
- We collect from a range of different providers, including schools and nurseries in the local area

Continuity of staff working in both our after school and school holiday time provisions get to know families, children and their needs

Sunflower Project, lead by qualified teachers, provides support with homework alongside developing numeracy, literacy and key skills

We provide a freshly prepared home-cooked meal each day, with a different weekly menu. We can cater for all dietary needs

Open daily until 6:30pm for hassle-free pickup

Collection and drop-off service: We can collect from school-based clubs and drop off to other providers, e.g. Brownies, Beavers or Football

The Lounge is open for children attending middle school so that they have their own space and greater independence

Trained EYFS specialists ensure that little ones get the extra care and support they need to flourish

A TYPICAL SESSION IN TERM-TIME

15:15-16:00

Children collected from their schools by Always Growing Staff and transported to base

16:00-16:30

Sunflower Project Time! Children are supported to either complete their school homework, do their school reading or take part in our challenges. Our EYFS children have a specialised programme to help them develop the key skills they need

16:30-17:00

Outdoor time. In summer this means getting outside and in the winter or when the weather is poor using the indoor sports hall

17:00-17:30

Dinner time! We provide a freshly prepared meal each day. We change the menu regularly and promote healthy eating. We are able to cater for any dietary needs. During meal time everyone eats together and the children are responsible for clearing their tables

17:30-18:30

Free play and Home time. During this time children have the chance to relax and engage in Free Play within the different zones. Children also have the chance to take part in planned activities following different seasonal themes

ALWAYS GROWING NURSERY

- Since January 2019, Always Growing Nursery offers a unique blend of childminding and nursery-based childcare
- We offer the personal attention of childminding, within the structure and professionalism of our existing childcare provision, which places independent learning and development at the forefront of what we do

Come and visit us to find out more. Get in touch 07761 293425
info@alwaysgrowing.co.uk

What makes us different?

Stimulating
Home away from
Home
environment

Regular trips and
visitors

Flexible hours to
suit your needs

Professional
rigour,
qualifications,
policies and
procedures

Consistent
childcare if your
child attends a
Windsor school
after nursery

NURSERY KEY FEATURES

- Our nursery is open 08:00-18:00 year round. We are closed between Christmas and New Year and Bank Holidays, and for up to 5 inset days too.
- We accept children from the age of 9 months, but also accept 'rising nines' for those children and parents who are ready a little earlier.
- We offer bookings based around full days and half days, with a minimum of four sessions per week (one full day = 2 sessions).
- Bookings are calculated and are payable by a monthly fee. Fees are chargeable 50 weeks of the year.
- We are able to offer the 15 or 30 hours of free childcare. We offer stretched funding and can give you more information about this.

NURSERY KEY FEATURES

Continuity of childcare as children get older through our after school and school holiday time provisions. We get to know families, children and their needs

Main Room play areas meet the 7 areas of EYFS Development

A language rich environment to encourage positive communication and expression

Structured academic play activities take place throughout the session

Children experience elements of all cultures from around the world through music, stories and art

We provide two freshly prepared home-cooked meals each day, with a different weekly menu. As well as a nutritious breakfast daily. We can cater for all dietary needs

We embrace draw on a range of Early Years pedagogies to promote of independence and real life responsibilities

Two Garden Areas allow for learning and being active in the great outdoors. We also have other school spaces to use and are in an excellent location for local trips and walks

A TYPICAL MORNING IN THE NURSERY

08:00-09:00

Arrival and Welcome

Children are dropped to their allocated classroom where they spend the first part of the day. Children need a relaxed, stimulating start and this involves a variety of activities and exploring all of our play areas.

10:30-11:30

Outdoors and Active

Whether we are on our morning walk, watering our plants or playing in the garden, we appreciate the need to explore the wonderful world outside. We try and do this every morning, unless we have extremely adverse weather. Bring your rain coat and wellies!

09:00-09:30

We provide a nutritious varied breakfast each day. We have fruit, cereal and other breakfast items for the children to choose once they have helped set the table.

11:45-12:30

Lunchtime

Our four-week menu means the children experience a variety of freshly prepared balanced meals. Our older children are responsible for setting the table and serving themselves food. All children are encouraged to feed themselves and we all eat together, using proper plates, glasses and cutlery. After lunch we say goodbye to our morning children and welcome our afternoon children to the session.

09:30-10:30

A chance to take part in focused activities to build and develop key skills. These activities are designed with the guidance of the Early Years Framework and in line with our pedagogy and the events taking place at that time of year too. We may have a visitor during this time to provide a diverse range of experiences.

A TYPICAL AFTERNOON IN THE NURSERY

12:30-14:30

Nap time

We welcome our afternoon children during this time who have the chance to join the other children for some quiet time and nap or explore what is on offer in the other room.

17:00-17.30

During this time we have a chance to free play, take part in structured activities and team games. This may be inside or outside depending on the weather and what the children would like to do. Children begin to be collected at this time.

14:45-15:45

This is another chance to take part in different focused activities to build and develop key skills. Children can select different activities they would like to do, linking to our four Pillars of Pedagogy. Children are encouraged to be responsible for clearing up after themselves when they have finished.

17:30-18:00

At the end of the day we have a chance to catch up on the excitement of the day. It is also time to say goodbye to all children as we close.

16:30-17:00

Tea Time

A freshly prepared balanced meal is provided. During tea time, everyone sits together to eat. Like lunchtime, children are expected to take responsibility for setting the table and clearing away.

EARLY YEARS AND PRACTICAL SUPPORT

- Nursery Practitioners plan and evaluate daily activities to support children's play at the rate and stage that suits your child. Frequent observations are carried out to help identify the stage of children's development and monitor progress carefully to celebrate achievements and identify areas in need of greater focus
- We encourage care of the person and care of the environment throughout the nursery. Alongside this, we are promoting fine motor skills, coordination, sequencing and independence.

Learning Journeys

Holistic recording of learning and development

Links to Early Years Foundation Stage

View your child's progress at a glance whenever you wish on Family

Journey follows the child when they graduate from nursery

Collaborative multi-agency working to support children

THE SUNFLOWER PROJECT

Specific activities for EYFS to give them the support to flourish in our care

Specialist programme to support year round development of key skills

Weekly team challenges provide development of teamwork and communication

Activities provide a range of challenges and stimulate thinking skills

Programme designed by qualified teachers and EYFS specialists to complement the school curriculum

Support with homework and literacy and numeracy development



EYFS AT ALWAYS GROWING

Specific activities for EYFS to give them the support to flourish in our care

In holiday time, all children 5 and under receive a green wrist band and this group are allocated an experienced practitioner to support them during the day

Small group activities that are adult-led so children can benefit from a consistent face

Scaffolding of play to support children's development

Programme designed by qualified teachers and EYFS specialists to complement the school curriculum

Activities planned to promote children's development in line with the EYFS Framework and meet the 7 areas of learning

BOOKING WITH ALWAYS GROWING

Nursery Rates

Session	Details	Cost per day	Cost per month
Full time	8.00am-6.00pm	£65.00	£1354.17
Part time	Morning 8.00am-1.00pm Afternoon 1.00pm-6.00pm	£38.00	£791.67
Extended day	7.30am-8.00am 6.00pm-6.30pm	£5.00 £5.00	£104.17 £104.17

Out of School - Holiday Rates

Session	Details	More than 7 days in advance	Less than 7 days in advance
Full Day	8.30am - 5.30pm	£32.00	£35.00
Half Day	Morning: 8.30am - 1.00pm Afternoon: 1.00pm - 5.30pm	£20.00	£22.00
Early Drop Off	8.00am	£3.00	£4.00
Late Pick up	6.00pm	£3.00	£4.00

Out of School - Term Time Rates

Session	Details	More than 7 days in advance	Less than 7 days in advance
Full Session	Pickup from Trinity School- 6.30pm	£14.00	£15.50
Full Session	Pickup from other providers - 6.30pm	£13.00	£14.50

- Book online with ultimate flexibility - book as much or as little as you need, with as little as 24 hours notice (holiday and term time only)
- Clear pricing structure
- Range of payment options: credit/debit card, Childcare Vouchers, Tax-Free Childcare Scheme or cash
- Stripe payments for credit/debit card provide cutting-edge technologies to handle payment securely and remember you for faster payment
- We accept the 15 or 30 hour entitlements in our nursery, and offer the stretched funding arrangement

Powered by **stripe**

SOME COMMON QUESTIONS

Are you OFSTED Registered?

Yes. Our registration number is EY487038. We are rated as a Good provider

Is there help with the costs of childcare?

We accept childcare vouchers and the Government Tax-Free childcare scheme. We can also support parents with a monthly repayment plan. Contact the Directors for more information or more information is here: <https://www.childcarechoices.gov.uk>

Do I need to provide food?

This depends on whether you are attending term time or holiday time. We provide all food in term time. In holiday time, we provide a morning and afternoon snack. Children need to bring a packed lunch with them. We request that all food brought into Always Growing is free from nuts. In the nursery, two meals per day are provided (full day only). All meals are provided in the nursery all year round.

How do I book?

All bookings are made through our website. The first step is to complete our registration form. You will then be given an ID Code for each child. You can then book sessions through the system. Some sessions are bookable up until midnight the day before the session starts. Late bookings on the day cannot be guaranteed and are subject to payment on drop-off

<https://booking.alwaysgrowing.co.uk/>

Are bookings refundable?

Bookings are non-refundable and non-transferrable. Please check bookings carefully

Do you offer discounts?

We offer a 5% sibling discount for each child attending the same session on the same day across all our provisions. Our Early Booking Rate applies to holiday and after school bookings made more than 7 calendar days before your child attends the setting

SOME COMMON QUESTIONS

How do we support children's learning and development?

Developing children and young people outside of the school setting is something that is central to the philosophy of Always Growing. Our team is lead by qualified teachers, we use our experience and knowledge to promote every day learning.

Our strong focus on EYFS ensures that our youngest children get the support they need to thrive and develop. The Sunflower Project is something that spans all of our provisions and provides daily stimulation and challenge, alongside adult support and encouragement, that children need to ensure that every day there are opportunities to learn and develop. We plan activities carefully with the aim of providing a range of different areas that the children can focus on. Our background in both psychology and special educational needs provides us with specialist knowledge and experience to promote lifelong development for children in our care. We have spent time researching and developing our four pillars of pedagogy (methods of teaching) which utilise the best parts of a range of approaches

What is the procedure for giving medicine to children?

As outlined in our medical policy, we are able to administer prescribed medicine to children with appropriate consent. We are also able to support children who may need an auto injector for allergies or children who need regular medication

What is the approach to discipline?

Always Growing's philosophy is to manage behaviour in a positive way. We have a range of different strategies in managing behaviour and we encourage children to make good choices. We have a clear, consistent routine and structure to engage the children positively. We have sufficient variety and activities available and ensure that we have plenty of staff to support the children in every way

SOME COMMON QUESTIONS

How do we ensure the safety of children in our care?

We aim for a ratio of 1:8 both after school and in holiday time which is well within Ofsted guidance. Ratios for our nursery provision will be different and in line with statutory guidance. This allows us to ensure that children have the attention and support that they need to flourish. We are mindful that children at different ages and stages of development need extra care and our EYFS specialists provide support to our younger children. All our staff have valid DBS checks. Our policies and procedures are regularly reviewed and updated in line with the latest statutory guidance and best practice. We are more than happy to answer any questions in relation to safety, please don't hesitate to get in touch

What experience and qualifications do we have?

Always Growing is passionate about developing staff. We are lead by two qualified teachers who are able to draw on their extensive experience of teaching to support the children in our care. All of our Senior Leadership Team hold qualifications at Level 3 or higher. A number of our other staff hold relevant childcare qualifications and we support staff to obtain up to date qualifications and provide regular internal training

How do we support children with additional needs?

Our team is lead by our Special Educational Needs Coordinator (SENCO). We have considerable experience in supporting children and young people who have additional needs, medical needs or who are fostered. Please get in touch with us to discuss individual cases and to set up an action plan if required

OFSTED



- You can read our latest inspection report

Children have plenty of opportunities to be physically active

The management team knows what it does well and what needs to improve

Staff relate well with children. They share good interactions and are attentive to all children's needs. Children form secure attachments with staff, helping to support their emotional well-being successfully.

Staff are friendly. They listen to children well and value what they say

Partnerships with schools children attend are well established

TESTIMONIALS

The reason we have used Always Growing and still do is because my son loves coming. When I come to pick him up, he doesn't want to come home

I could not be happier with the service Always Growing provides, and I rely on them to look after the most precious person I have in the world

They really care about children and improving the lives of the children in their care

I have always found Always Growing to be very supportive of my children's individual requirements. They were willing and able to put a support plan in place for my son where other care providers were unable to help.

OTHER SERVICES

Specialist Support and Advice

We are able to offer a range of professional support and independent consultancy advice to parents, carers and schools in relation to a range of educational subjects including Special Educational Needs, inclusion and next steps. We are able to draw on our qualifications and experience working in both mainstream and special educational needs schools and working with a range of external agencies and Local Authorities. This has taught us that every child has the potential to grow and develop with the right support available. We keep up to date with current thinking in education and also with legislative changes. We aim to provide high quality advice as either a one-off session or more comprehensive package of support. We are able to advise on Education Health and Care Plans, requesting assessments, understanding professional reports, knowing how to get the right support and holding meetings. We are always happy to have an informal discussion as to how we can work with and support your family.

Birthday parties

We are able to provide bespoke birthday party entertainment to meet your needs and fit with a theme of your choosing. Each party is designed to your specifications and we are able to offer suggestions for different structures and ideas. Some of our previous themes have included explorers, Lego, Minecraft and a bug party including real edible bugs! We can even help with finding a venue too. We have a range of different activities, including our own bouncy castle, giant lego, outdoor equipment and face painting. We are fully insured and our staff are first aid trained.

MEET THE SENIOR TEAM



Lewis - Director

I'm Lewis and I started Always Growing in January 2015 with the aim of providing the highest quality childcare provision. My journey in childcare began with my Level 5 in Playwork. Since then, I have a BSc (Hons) in Psychology, MA Education and am a Qualified Teacher. I am working towards my Doctorate in Education



Ben - Director

I'm Ben and have been with Always Growing from the beginning. My journey in childcare began with working in schools and I specialise in Special Educational Needs and inclusion. I have a Post Graduate Certificate in Special Educational Needs and Disability. In addition, I have a BSc (Hons) in Psychology, am a Qualified Teacher, and am the Designated Safeguarding Lead for Always Growing



Sam - Education and Support Consultant

I'm Sam and have been working in the Early Years Sector for over 20 years. I am Montessori trained, working with children from birth to 6 years and am also a qualified forest school leader. I am responsible for developing our learning curriculum at Always Growing and putting into place the four pillars of our pedagogy into the children's day to day experiences

MEET THE SENIOR TEAM



Kim - Out of School Leader

I'm Kim and have been working within the education sector for the last 8 years since completing my BA Honors Degree in Childhood, Youth and Community Studies. I am responsible for the running of our After School Sessions and Holiday Clubs. Alongside being the Out of School Leader, I work within a Primary and Nursery School supporting across many years groups and am also part of the Teacher Cover Team.



Tara - Deputy Nursery Leader

I'm Tara and have been working in childcare for 10 years. I have a level 3 in childcare and am working towards my BA (Hons) Childhood and Youth Studies. I am responsible for the Sunflower Room for children under 2 at Always Growing and support in the day to day running of the nursery as a whole



Shakiba - Deputy Nursery Leader

I am Shakiba and I have been working in the Early Years for over 11 years. My drive to gain a deeper insight into child development led me to achieving my BA (Hons) in Childhood and Youth Studies. I am responsible for the Butterfly Preschool Room for children over 2. As an advocate of making a difference to every little mind, I am passionate about working together with all the children, staff and families and help set the right foundation for the little ones' future. We aim to make sure that every voice is heard

HOW TO FIND US





Business Address:

Always Growing Limited
48 Haywards Mead
Eton Wick
Windsor
SL4 6JN

Premises Address:

The Windsor Boys' School
1 Maidenhead Road
Windsor
SL4 5EH

www.alwaysgrowing.co.uk

07761 293425